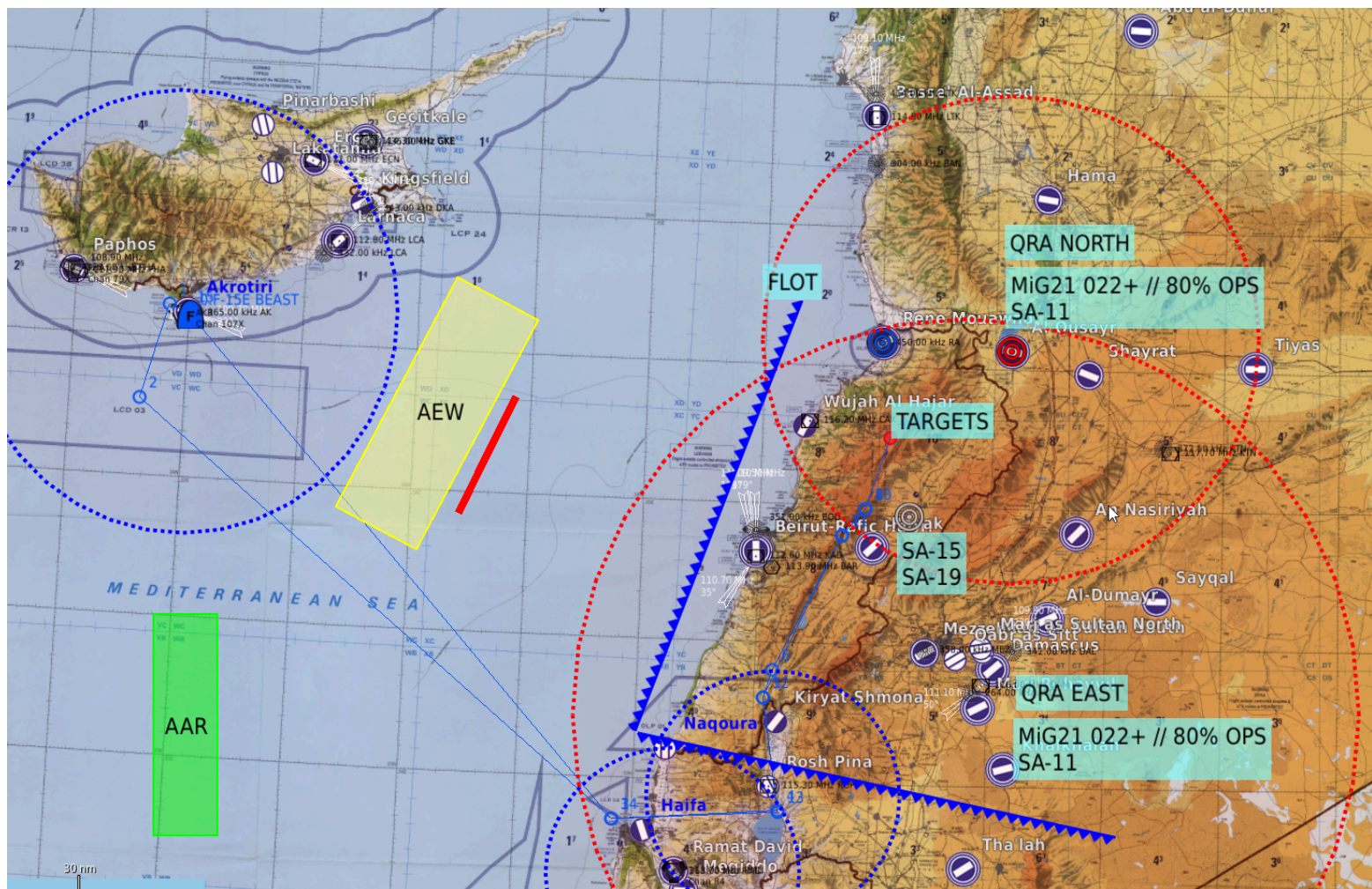


# SITAC



# INTEL

En plein conflit israélo-palestinien, Le mollah Saadhate El Ebon fête son 78<sup>e</sup> anniversaire dans son village natal de El Bouz dans le haut shouf Libanais.  
Il s'agit de l'aider à souffler ses bougies.

C'est une opportunité que notre coalition ne compte pas laisser passer et pour cela elle mandate 2 escadrons des forces alliées détachées en cette belle île de Chypre.

Le 389th aura pour mission d'épauler et défendre le 492nd dans sa mission strike sur les lieux identifiés de présence du mollah.

# ROEs

OUTLAW = BEYOND FLOT // POP UP QRA (10 Nm)  
SPADES = LACK OF CORRECT M4 ou (and M1 (11/31)

OUTLAW or SPADES = BOGEY  
OUTLAW and SPADES = HOSTILE

WE DON'T EXPECT FRIENDLY FORCES BEYOND FLOT PRE PUSH  
SLOW MOVER EXPECTED = OUTLAW ONLY

# RADIO PRESET

3rd Wing Template 2.0

# MODS

Syria/Freq 2.0

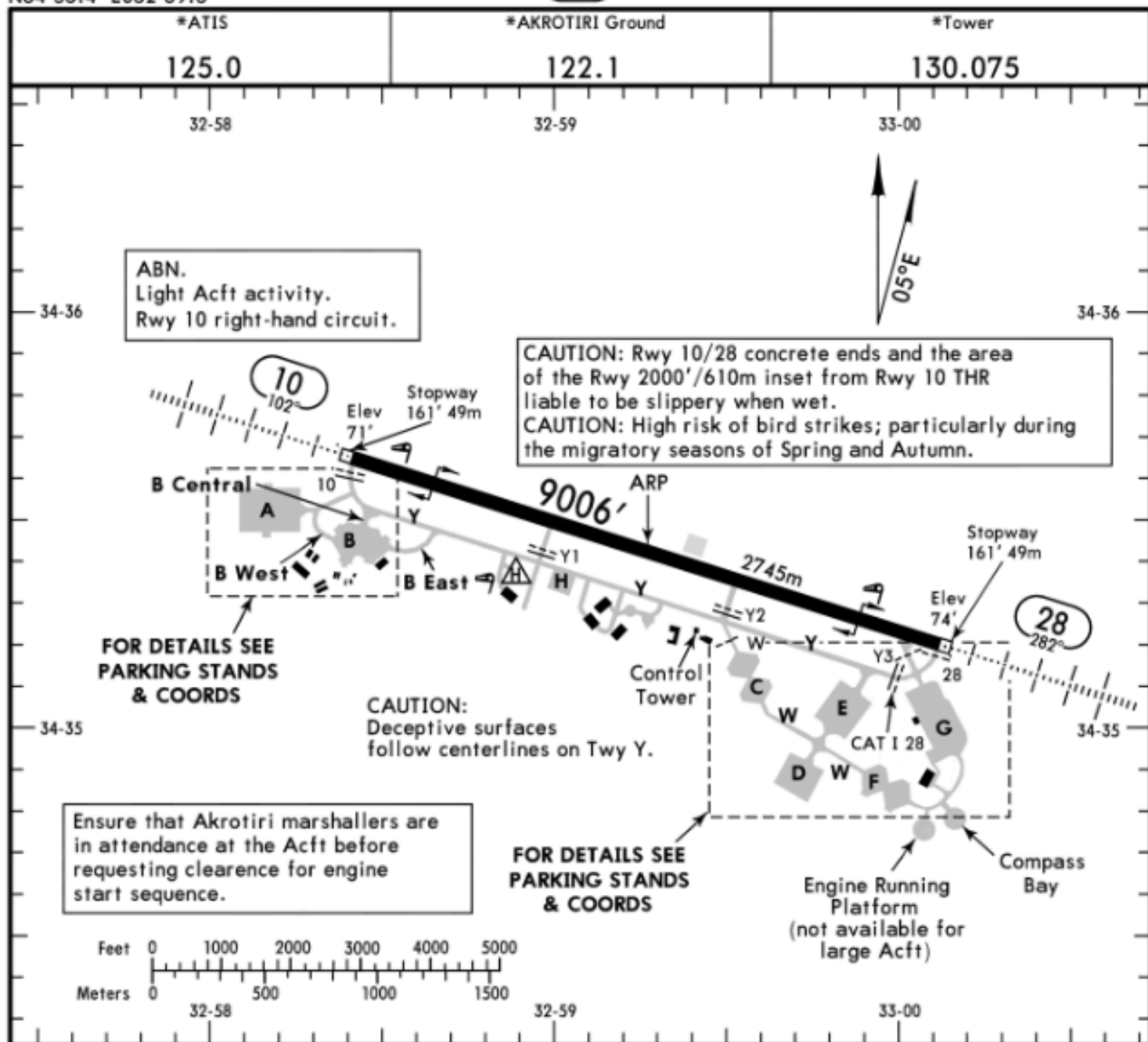
## MISSION/DTC

All waypoints are allowed in DTC,  
 GBU SEQ/MSN are pre planned in DTC  
 You have full authority to select A/G weapons

MISSION OPS SAADHATE SOUFFLE SES BOUGIES		DoF	METAR				JOKER	BINGO			
		02/05/2024 01:40Z Z+3	LCRA 020200Z 23608KT 6000 SCT140 BKN180 BKN270 FEW400 12/11 Q3008				6000	3000			
CALLSIGN / CHAN	TASK	MSN	AVIONICS			LOAD OUT				TIME	
			M1	M3	FATHER	A/A	A/G	POD	TNK	TAXI	T/O
THUNDER21 / A1	SWP	4221	11	6121	21X	5/2/1+		T+P	2	0200	0205
THUNDER22 / A2	SWP	4221	11	6122	84X	5/2/1+		T+P	2	0200	0205
EAGLE31 / E1	STK	7458	31	2131	31X	3/0/1+	JDAM	T+P	2	0205	0210
EAGLE32 / E2	STK	7458	31	2132	94X	3/0/1+	JDAM	T+P	2	0205	0210
EAGLE33 / E3	STK	7458	31	2133	94X	3/0/1+	JDAM	T+P	2	0205	0210
EAGLE34 / E4	STK	7458	31	2134	94X	3/0/1+	JDAM	T+P	2	0205	0210

WAYPOINTS				COMPLAN				
SP	NAME	COORD		REMARKS	AGENCY	PUSH	FREQ	TCN
	BE	N 34°35.296'	E 36°00.299'	BULLDOG	ATC1/AKROTIRI	PRI01 ▾	257.750	107X
					ATC2/RAMA DAVI	PRI02 ▾	258.450	84X
						---	---	
					OVERLORD	PRI09 ▾	322.150	
					OVERLORD B/U	AUX30 ▾	123.600	
						---	---	
					TEXACO #1	AUX12 ▾	138.400	45X
					TEXACO #4	AUX14 ▾	135.700	51X
						---	---	
						---	---	
						---	---	
						---	---	
						---	---	

THREATS					NOTES	CSAR
MISSILE	MAR B4/B3/B2/B1	SAM/AAA	CM	Nm/FL		
R24R (SA) ▾	13/11/10/9	SA15 ▾	CH	09/20	CAP INGRESS 360  DPT WEST SID 2 / ANANE ARR à convenance	NBR
R24T (IR) ▾	13/11/10/9	SA11 ▾	CH	23/++		WORD
R60M (IR) ▾	5/4/4/3	SA10 ▾	CH	46/++		LETTER
R3S (IR) ▾	4/3/3/2	SA19 ▾	EV	05/12		COLOR
---		SA6 ▾	CH	22/26		DURESS
---		---				SARDOT



ADDITIONAL RUNWAY INFORMATION

RWY	LANDING BEYOND	USABLE LENGTHS		TAKE-OFF	WIDTH
		Threshold	Glide Slope		
10 ① 28	② HIRL (30m) ③ HIALS PAPI (angle 3.0°)	OFZ	8034' 2449m		148' 45m

- ① Rwy grooved.
- ② RL (90m) also available.
- ③ length 900m

GENERAL

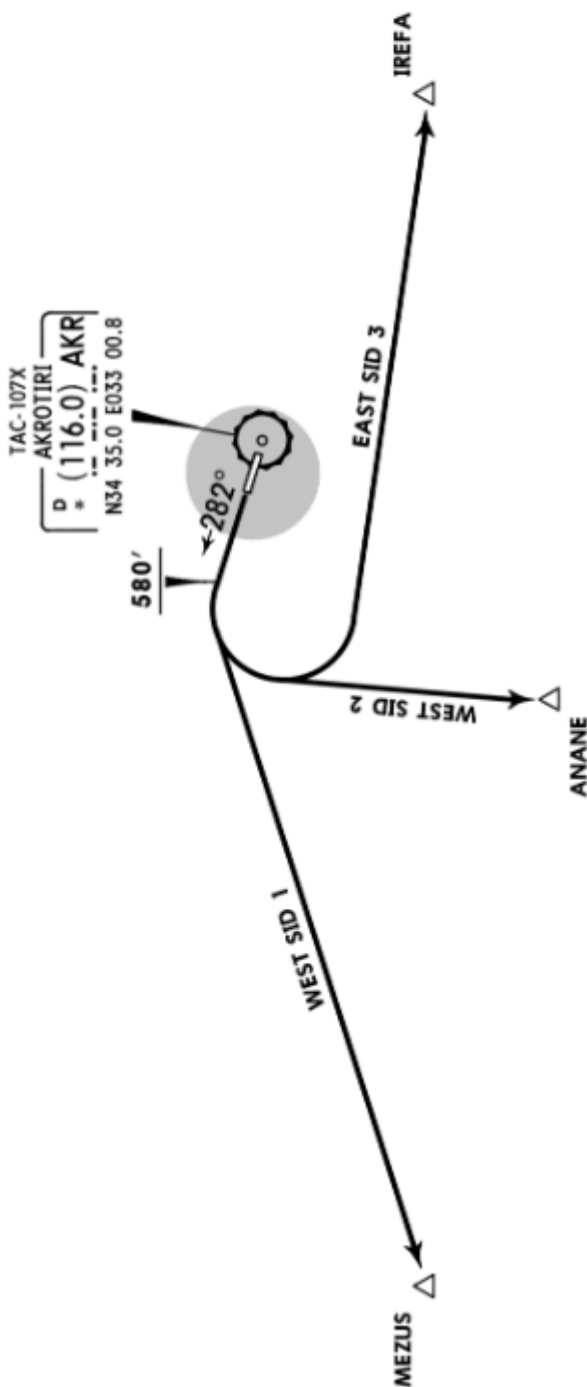
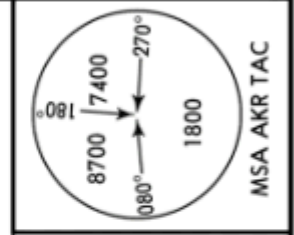
All visiting Acft are to contact Flamingo Ops on 234.050 at approx 200 NM, but not later than 100 NM and request required ground services and parking instructions.

Apt Elev  
75'

- Trans level: By ATC Trans alt: 9000'
1. SIDs include minimum noise routings.
  2. No turns before DER.
  3. Turns to NORTH of RWY prohibited.
  4. Aircraft unable to locate ANANE/IREFA/MEZUS should request RADAR vectors from ATC.

For UHF see MIL-101 listing

EAST SID 3 [EAST3]  
WEST SID 1 [WEST1]  
WEST SID 2 [WEST2]  
OMNIDIRECTIONAL DEPARTURES  
(RWY 28)

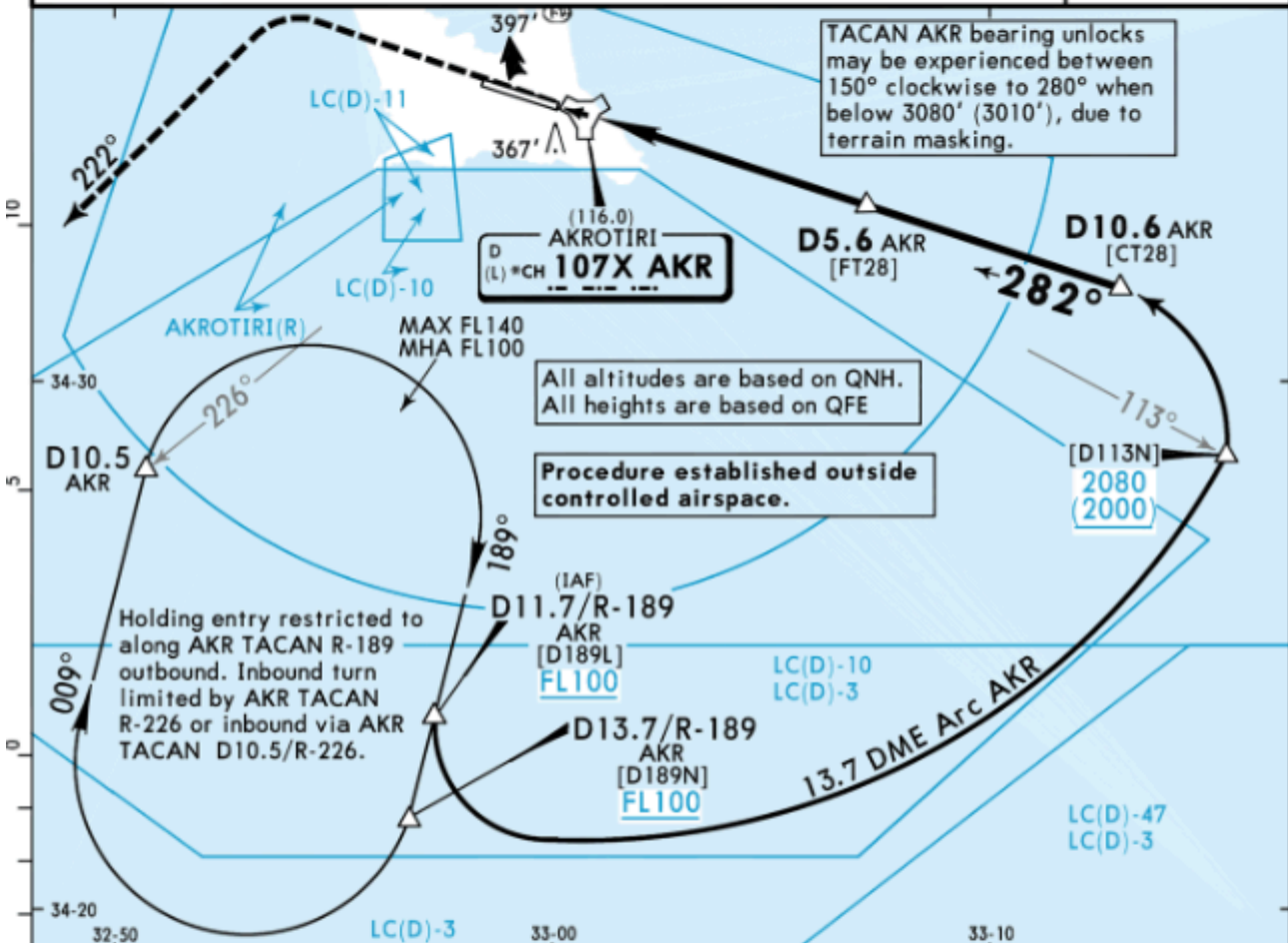


These SIDs require a minimum climb gradient of 7.0% up to 580' due to obstacle and operational purposes.

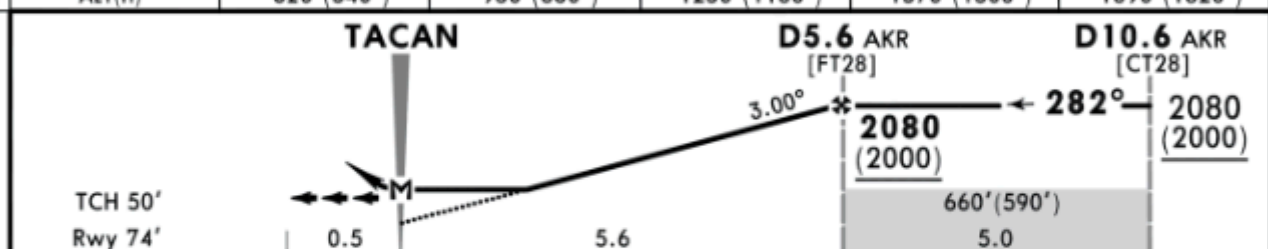
Gnd speed-KT	75	100	150	200	250	300
7.0% V/V (fpm)	532	709	1063	1418	1772	2127

SID	ROUTING
EAST SID 3	Climb on runway track to 580', turn LEFT direct to IREFA. SID terminates at 9000'.
WEST SID 1	Climb on runway track to 580', turn LEFT direct to MEZUS. SID terminates at 9000'.
WEST SID 2	Climb on runway track to 580', turn LEFT direct to ANANE. SID terminates at 9000'.

*ATIS 125.0	*AKROTIRI Approach (R) (Initial contact) 123.6 235.050	*AKROTIRI Tower 130.075 339.850	*Ground 122.1 240.1	NICOSIA Radar 125.5 126.3
TACAN AKR *CH 107X (116.0)	Final Apch Crs 282°	D5.6 AKR 2080 (2000)	MDA(H) 490' (420')	Apt Elev 75' Rwy 74'
<b>MISSED APCH: Climb on track 282° to 2080' (2000'), then turn LEFT on track 222°, climb as directed. Missed apch terminates at D15.0 AKR.</b>				
Alt Set: hPa      Rwy Elev: 3 hPa      Trans level: By ATC      Trans alt: 9000'				
In the event of serious interference on APP/TWR frequency relay messages via NICOSIA Radar.				



AKR DME	1.0	2.0	3.0	4.0	5.0
ALT(H)	620' (540')	930' (860')	1250' (1180')	1570' (1500')	1890' (1820')



Gnd speed-Kts	70	90	100	120	140	160	HIALS PAPI PAPI 2080' (2000') on 282°
Descent Angle	3.00°	372	478	531	637	743	
MAP at TACAN							
D5.6 AKR to MAP	5.6	4:48	3:44	3:22	2:48	2:24	2:06

<b>Military</b>		STRAIGHT-IN LANDING		CIRCLE-TO-LAND	
		MDA(H) 490' (420')		Prohibited North of Rwy 10/28	
		ALS out		Max Kts	
A				100	680' (610') V1900m
B				135	
C	V1200m		V1900m	180	780' (710') V2400m
D				205	780' (710') V3600m
E				1200' (1130')	V3600m

MIPS MIL

TOWER 251.05MHz  
118.60MHz  
4.300MHz  
39.50MHz



DCS SYRIA EFFECTIVE: 06 JUL 2021

DCS SYRIA EFFECTIVE: 06 JUL 2021

